

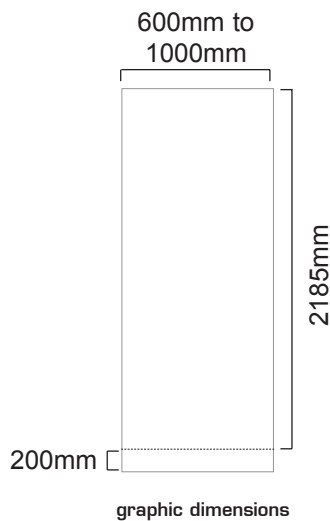
Original Banner 4

A strong, lightweight roller banner with removable cassette and built-in pole storage



features & benefits

- Removable cassette roller banner
- Quick-change graphic cassettes
- Built in graphic tensioner
- Requires no assembly tools
- Choice of widths from 600mm - 1000mm
- Available in black, silver or anodised silver
- Includes quality foam padded carry bag



Graphic tension may be re-applied or added to by rotating the cassette ratchet clockwise; 8 clicks of the ratchet equal 1 turn on the cassette spring.

(NB cassettes are supplied pre-tensioned)



hardware specifications

Hardware Dimensions (mm)
2220 (h) x 850 (w) x 175 (d) approx.

Weight:
4.5kg approx (including carry bag)
(800mm unit)

graphic specifications

Visible Graphic Dimensions (mm):
2185 (h) x 600 to 1000 (w) approx.

Substrate:
Add 200mm to graphic length to allow for roller. Material thickness between 225 and 300 microns.

additional info

Included in kit:
Base, bungee pole set, carry bag and 1 cassette.

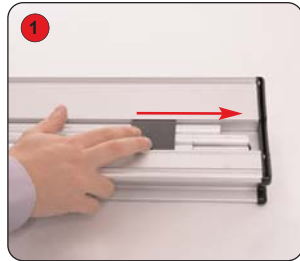
Availability:
Black or Silver powdercoated or Silver anodised

Assembly Instructions

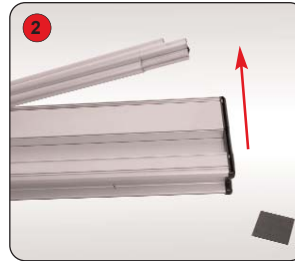
Banner stand assembly



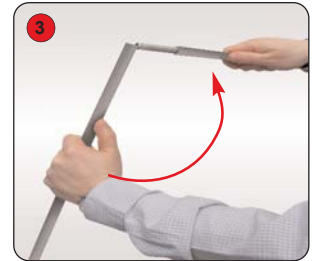
Kit includes: base, bungee pole set and carry bag.



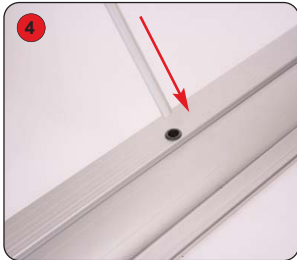
1 Turn the base over and slide the pole retainers off the base.



2 Remove the bungee pole set from the storage area.



3 Assemble the bungee pole.



4 Fit the bungee pole into the base.



5 Lift the top rail to raise the graphic from the base.



6 Lean the banner stand backwards and continue to extend the graphic.



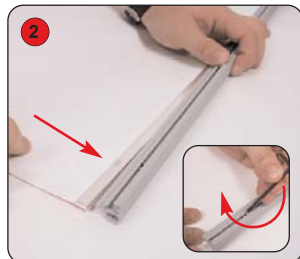
7 Secure the graphic into position by locating the bungee pole into the slots in the top rail.

Hold the Top rail whilst lowering the banner (do not drop) to prevent damage to the graphic.

Graphic attachment / cassette loading instructions



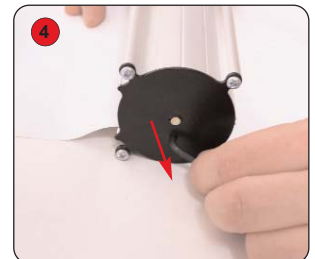
1 Remove the backing paper from the grip rail insert. Align and adhere the grip rail insert to the top edge of the graphic. (attach to rear face)



2 Slide the grip rail insert into the top rail, using a 2.5mm Allen key tighten the grub screws.



3 Remove the backing paper from the cassette leader. Align and adhere the graphic squarely to the leader. (attach to front face)



4 Whilst holding the graphic remove the locking pin from the cassette and gently allow the graphic to retract.

After fitting the graphic should be left for 24 hours before use to ensure the adhesive bonds sufficiently.



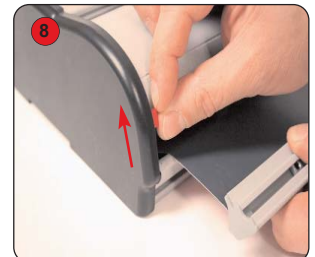
5 Slide down both red locking tabs on the left and right hand sides of the base



6 Lift open the lid. Place the cassette into the base.



7 Ensure the cassette is fitted correctly into the base.



8 Close the lid and slide up both locking tabs.

NB unit shown for steps 5 to 8 is not the Original Banner 4 unit, however assembly method is identical.

Note: Opening the cassette may invalidate the product warranty.