

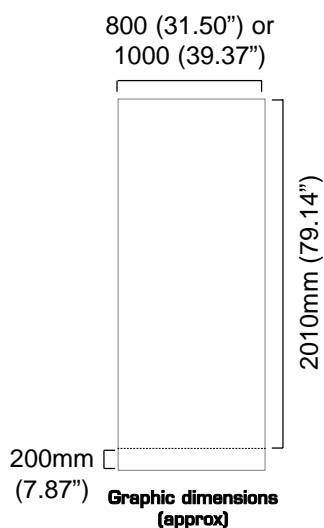
Eco Roller Banner



A lightweight economy roller banner with slim base and bungee pole making it very compact, complete with a twist out foot for extra stability.

features & benefits

- Lightweight components
- Reusable spring loaded rail clamp system for easy graphic application
- Hook/loop fastening quick change graphic application
- Twist out stabilising foot for extra stability
- Available in anodised silver
- 800mm and 1000mm graphic widths
- Includes quality padded carry bag



hardware specifications

800 Hardware Dimensions (mm):
2110 (h) x 830 (w) x 445 (d) approx.
83.10" (h) x 32.70" (w) x 17.52" approx.
(Depth dimension refers to twist out foot)

Weight:
2.5kg (5.5lbs) approx
(including carry bag)

graphic specifications

Visible Graphic Dimensions (mm):
2010 (h) x 800 or 1000 (w) approx
79.14" (h) x 31.50" or 39.37" (w) approx

Substrate:
Add 200mm (7.87") to base of graphic to allow for roller mechanism.
Recommended material thickness
225 - 300 Microns (8.86 - 11.81 Mils)

additional info

Included in kit:
Top rail, base, bungee pole set and carry bag

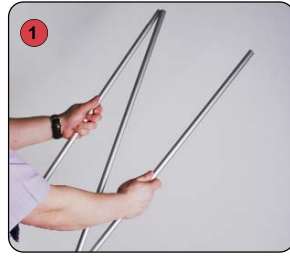
Availability:
Anodised silver

Assembly Instructions

Banner stand assembly



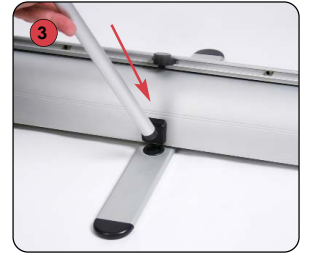
Kit includes: Top rail, base, bungee pole set and carry bag



1 Assemble the bungee pole set.



2 Open out the stabilising foot.



3 Fit the bungee pole into the stabilising foot.



4 Lift the top rail to raise the graphic from the base.



5 Lean the banner stand backwards and continue to extend the graphic.

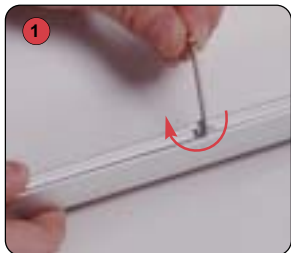


6 Secure the top rail cup onto the bungee pole.

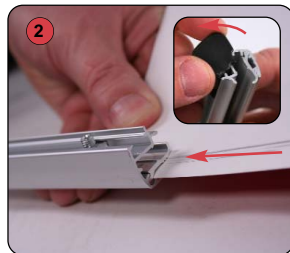


Hold the Top rail whilst lowering the banner, (do not drop) to prevent damage to the graphic.

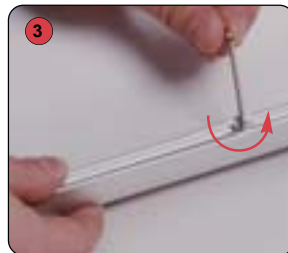
Graphic attachment instructions



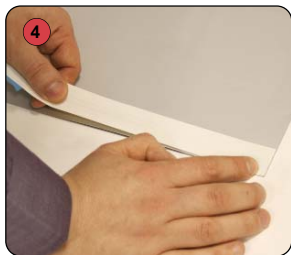
1 Loosen the top rail screws using a 2.5mm allen key.



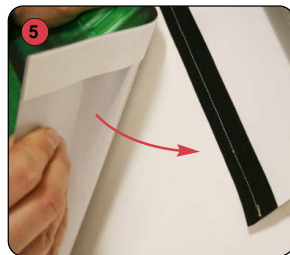
2 Rotate open the top rail end caps, then squeeze open the grip rail. Slide the graphic squarely into the rail.



3 Tighten the top rail screws.



4 Align and adhere hook fastener squarely to the bottom shorter edge of the graphic. (attach to back of graphic)



5 Securely attach the graphic to the loop fastener on the banner leader strip.



6 Whilst holding the top rail remove the locking pin from the base and gently allow the graphic to retract.

After fitting, the graphic should be left for 24 hours before use, to ensure the adhesive bonds sufficiently.

Note: Opening the banner stand base may invalidate the product warranty.